



SmartClick HMI

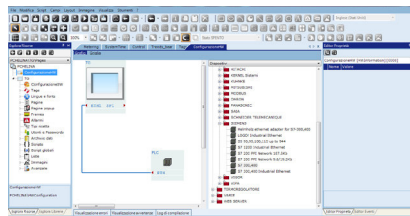
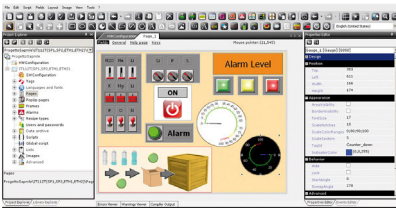
Best cost-to-benefit ratio

SC HMI series is an entry-level HMI solution equipped with ABS plastic chassis that guarantees great sturdiness and durability. SC HMIs are available in different sizes 7" (SC107 and SC207) and 10,1" (SC110 and SC210). All wide displays with white LED back-lighting and TRUE-FLAT Touch screen. Advanced technology combined with wide connectivity.

SC series is equipped with

- Ethernet port for programming and communication with the field
- A dual RS232/RS485 serial port with COM0 port functionality, the ESA's OPEN serial port enables communication with any kind of custom solution

SmartClick Software



SmartClick incorporates advanced functionalities including:

- Rich object library
- Level project page management
- Importing/exporting project data
- Transferring stored data
- Project back-up and restore
- VB script with intellisense
- OFF-LINE and ON-LINE simulator
- Dictionary
- Automatic project storage
- Indirect addressing

SmartClick is the software package for configuring SC HMIs. The enhanced features allow for the management of data structures, such as Recipes, Trends, Data Logs, active and historical alarms and User management in a quick and intuitive manner.



Features SC107 SC207 SC110 SC210

Display Size	7" Wide		10.1"	
Display Technology			TFT	
Display Colors			65.536	
Display Backlight			LED	
Display Resolution (pixel)	800 x 480		1024 x 600	
Backlight life (hours)			30 K	
Processor			ARM	
RAM	64 MB	32 MB	64 MB	
Flash	64 MB			
First serial port	Port 1 (RS232/RS485/COM0)	Port 1 (RS232/485/MPI)	Port 1 (RS232/RS485/COM0)	Port 1 (RS232/RS485/MPI)
Second serial port	Port 2 (RS232/RS485/COM0)	-	Port 2 (RS232/RS485/COM0)	
USB Host port	1 x v 1.1			
USB Device port	1 x v 1.1			
Cardbus Slot	1 x Secure Digital/MMC			
Ethernet	1 x 10/100 Mb			
Chassis	ABS Plastic			
Hardware clock	Yes			
Clock battery	Battery (min. durability 5 yrs)	Supercapacitor 72h		
Power Supply (Vdc)	18 - 32			
Consumption (W)	5			8
Operating Temperature (°C)	-10 ... + 50 (non condensing)			
Storage Temperature (°C)	-20 ... + 65			
Humidity	<85% (non condensing)			
External dimensions (W/H/D) (mm)	198,8 x 137,8 x 40,3	202 x 142 x 40	280 x 190 x 37,5	
Cut-out dimensions (W/H) (mm)	190,2 x 129,2	194 x 134	271 x 181	
Weight (kg)	- 0,8	- 1	- 1,4	
Protection degree (front)	IP 65			
Certification	CE			