

# AET1

- ETHERNET GATEWAY
- GALVANICALLY ISOLATED
- SELF POWEREED
- CAN BE USED WITH EVERY CONTROLLER (\*)



## FEATURES

SUPPORT	
Functioning	<p><b>AET1</b></p> <p>Support DHCP, automatically obtain an IP address and query IP address through serial setting protocol Support DNS function Auto-MDI/MDIX, RJ45 port with 10/100Mbps Serial port baud rate from 600 bps to 460.8 Kbps. Work mode: TCP Server Heartbeat package mechanism to ensure connection is reliable, put an end to dead link Under TCP Server mode, Client number ranges from 1 to 6; default number is 4 The global unique MAC address bought from IEEE Across the gateway, switches, routers Can work in LAN, also can work in the Internet (external network)</p>
FUNCTIONAL	
Processor	ARM
Flash	32k byte
Baud rate	38400, automatic selection
Master	Up to 6 (Pay attention ! On COMM side it's always an RS485)
ETHERNET	
Ethernet port number	1
Interface standard	RJ45
Rate	10/100 Mbps, MDI/MDIX, auto switch between cross and direct connection
Protection	2KV electromagnetic isolation
Network Protocol	IP, TCP, UDP, DHCP, DNS, HTTP, ARP, ICMP
Buffer	Send: 6K bytes, receive: 4K bytes
SERIAL	
Serial port number	1
Interface standard	TTL
Data Bits	8
Stop Bit	1
Check bit	1
Baud rate	600 bps ~ 460.8 Kbps
Flow control	Null
Buffer	Receive: 800 bytes
SOFTWARE	
Configuration	Computer set-up software, serial command, built-in webpage
GENERAL	
Dimensions	28 x 87 mm, depth 20 mm
Power	<1W
Mounting	On OMEGA DIN A rail
Operating / storage temperature	0... 50°C (32... 122°F)/-20... +60°C (-4... 140°F)
Operating humidity	5... 95 RH% without condensation

(\*) Note: which is not already equipped with an RS485 on board.

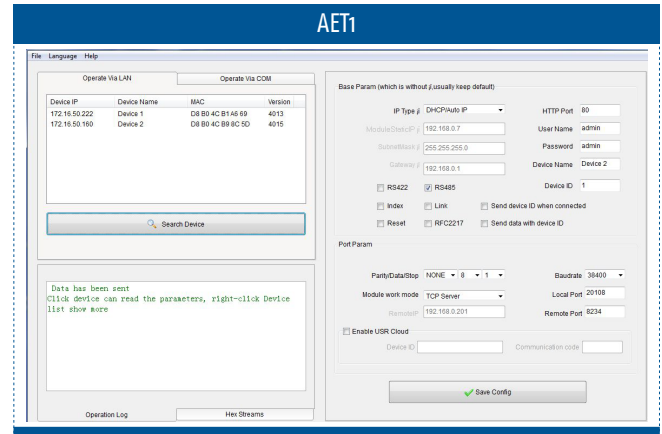
# HOW TO ORDER

To compose the part number, pls. choose one of the option for each variable

AET1	CODE
MODEL	
Ethernet gateway - standard version	---

Note: a TTL cable is supplied with length 20 cm (part no.: CATTLD020).  
In case of different needs, please contact our commercial dept.

# SCREENSHOT



# DIMENSIONS

