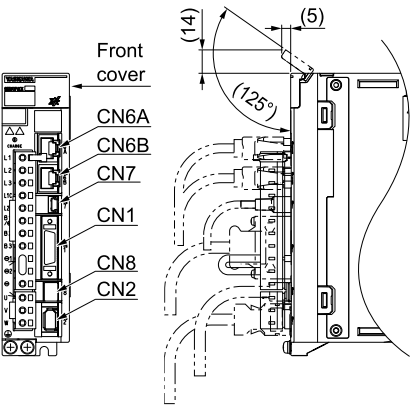


External Dimensions

Front Cover Dimensions and Connector Specifications

The connector shapes and pin assignments depend on the interfaces of the SERVOPACK. Refer to the following figures and table.

■ Front Cover Dimensions



■ Connector Specifications

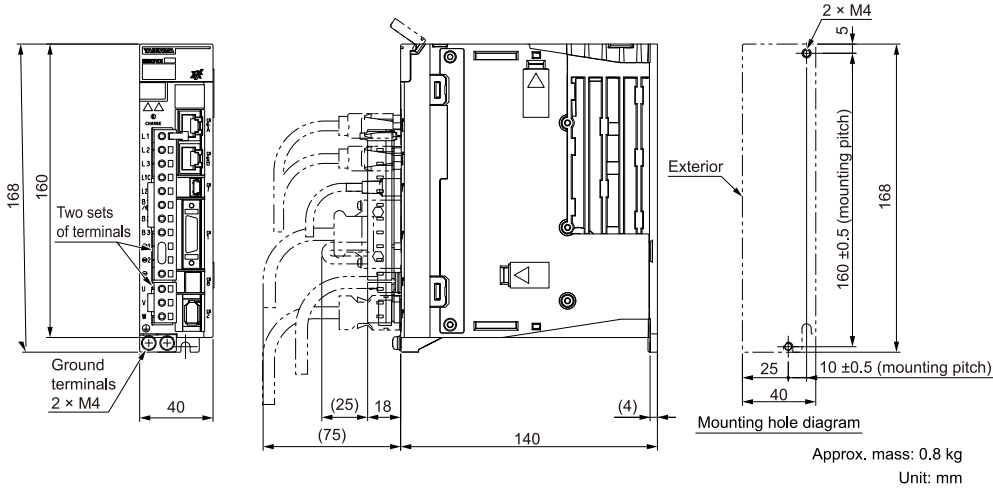
Connector No.	Model	Number of Pins	Manufacturer
CN1	10226-59A3MB	26	3M Japan Limited
CN2	53984-0681	6	Molex Japan Co., Ltd.
CN6A/B	3-1734579-4	8	Tyco Electronics Japan G.K.
CN7	2342993-1	5	Tyco Electronics Japan G.K.
CN8	2294415-1	8	Tyco Electronics Japan G.K.

Note:
The above connectors or their equivalents are used for the SERVOPACKs.

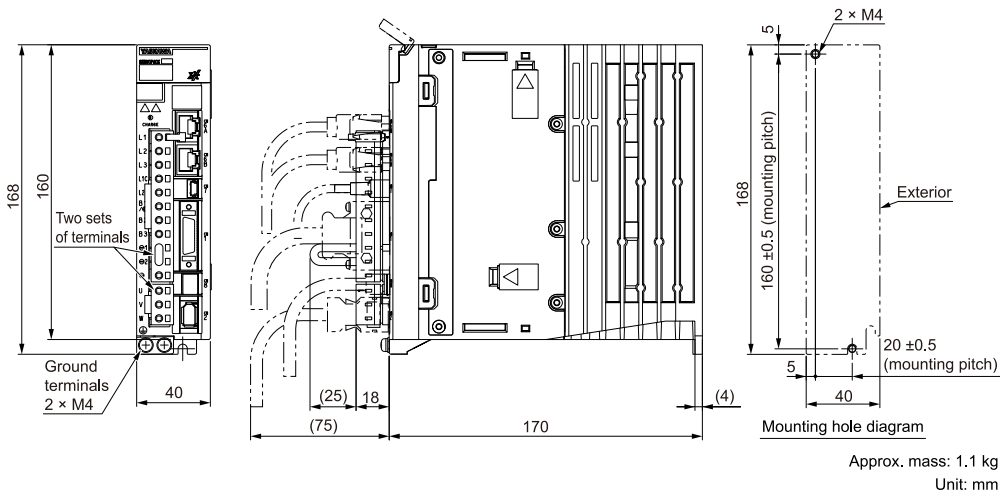
SERVOPACK External Dimensions

■ Base-mounted SERVOPACKs

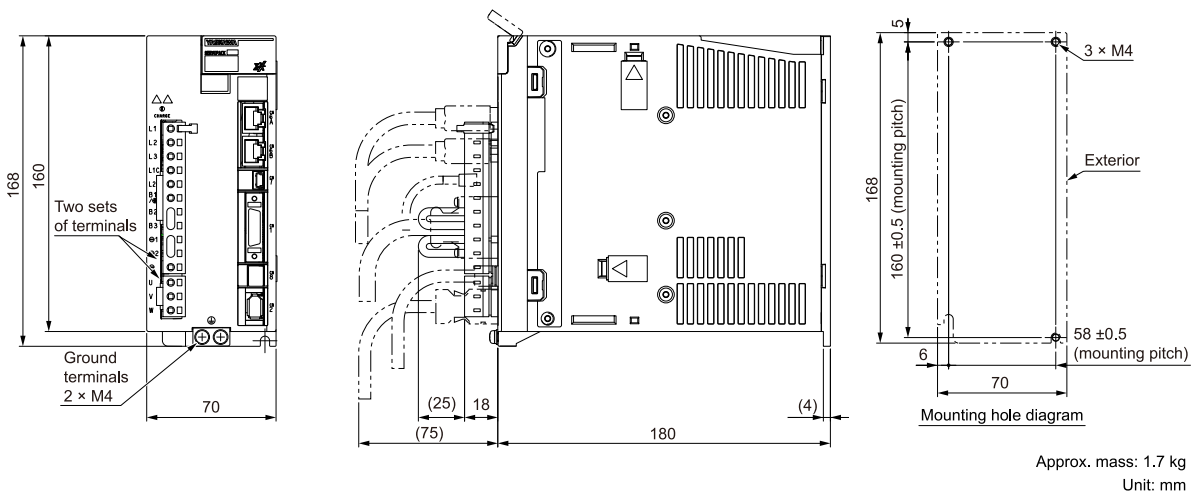
◆ SGDXS-R70A, -R90A, -1R6A



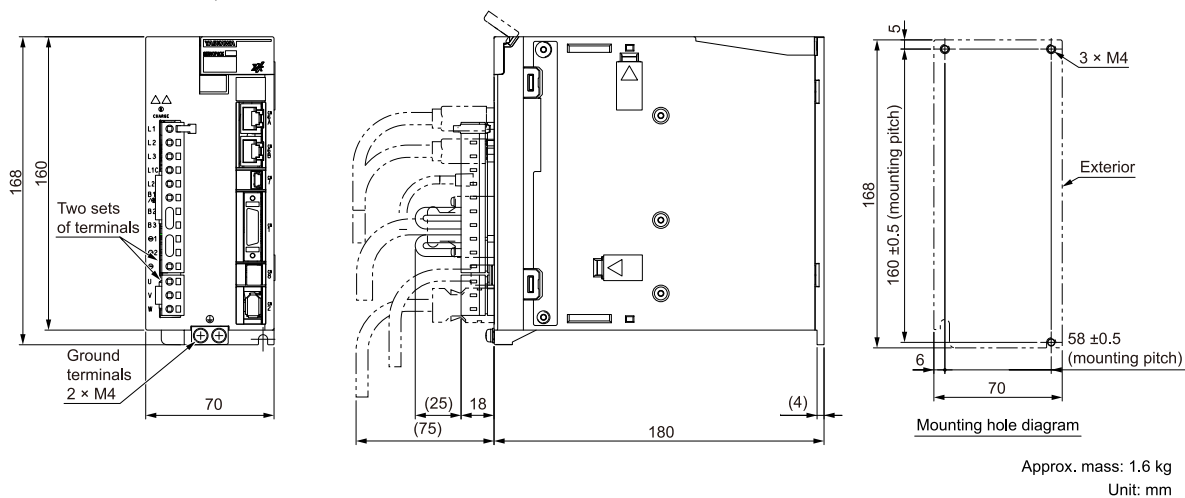
◆ SGDXS-2R8A



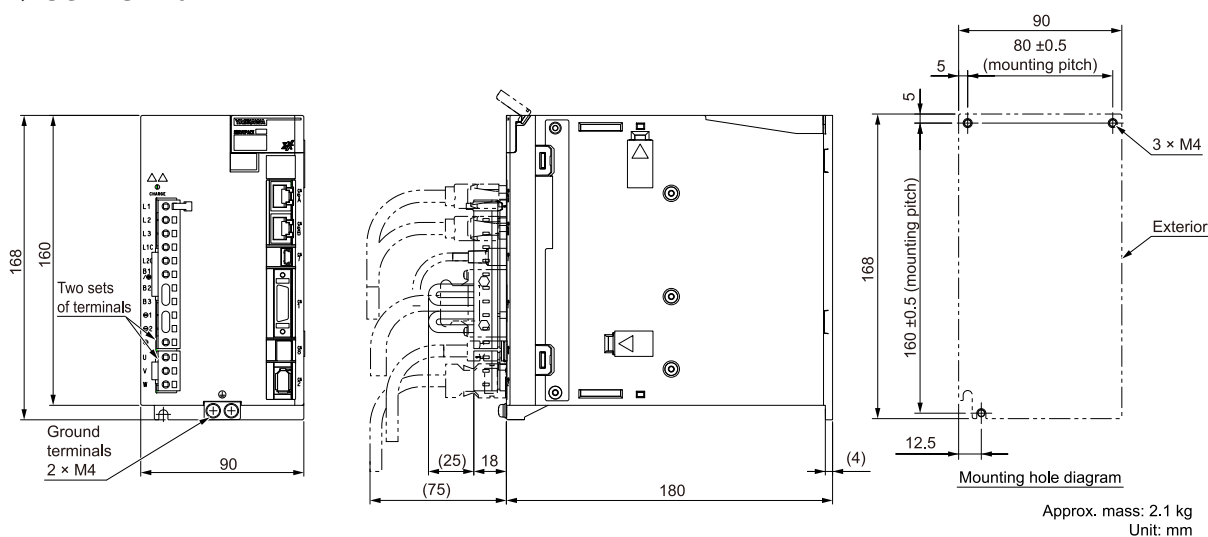
◆ SGDXS-3R8A



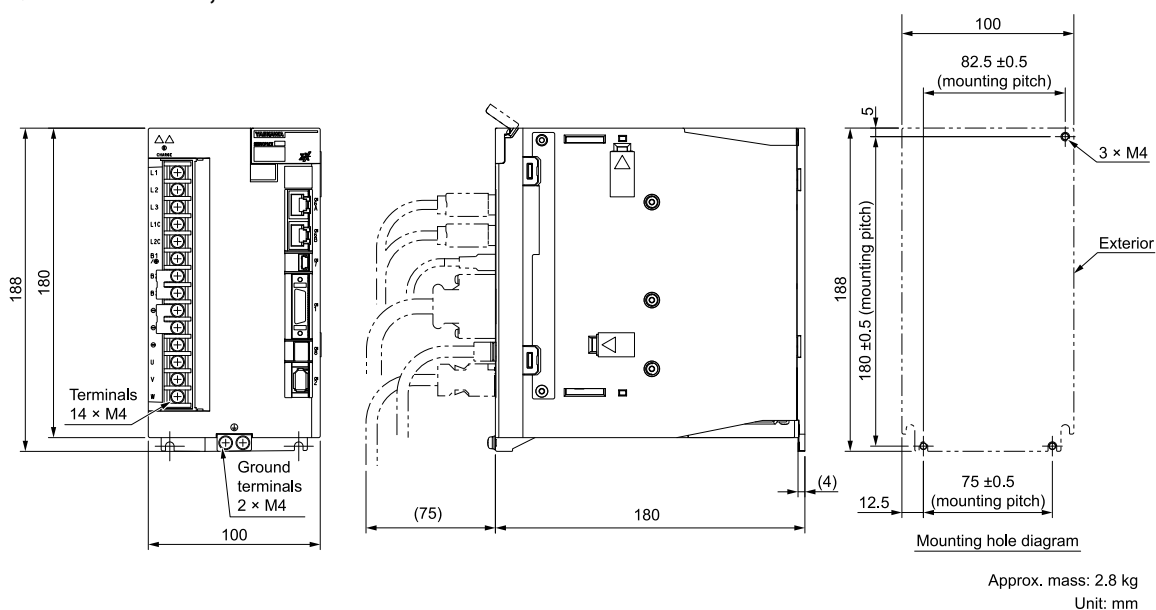
◆ SGDXS-5R5A, -7R6A



◆ SGDXS-120A



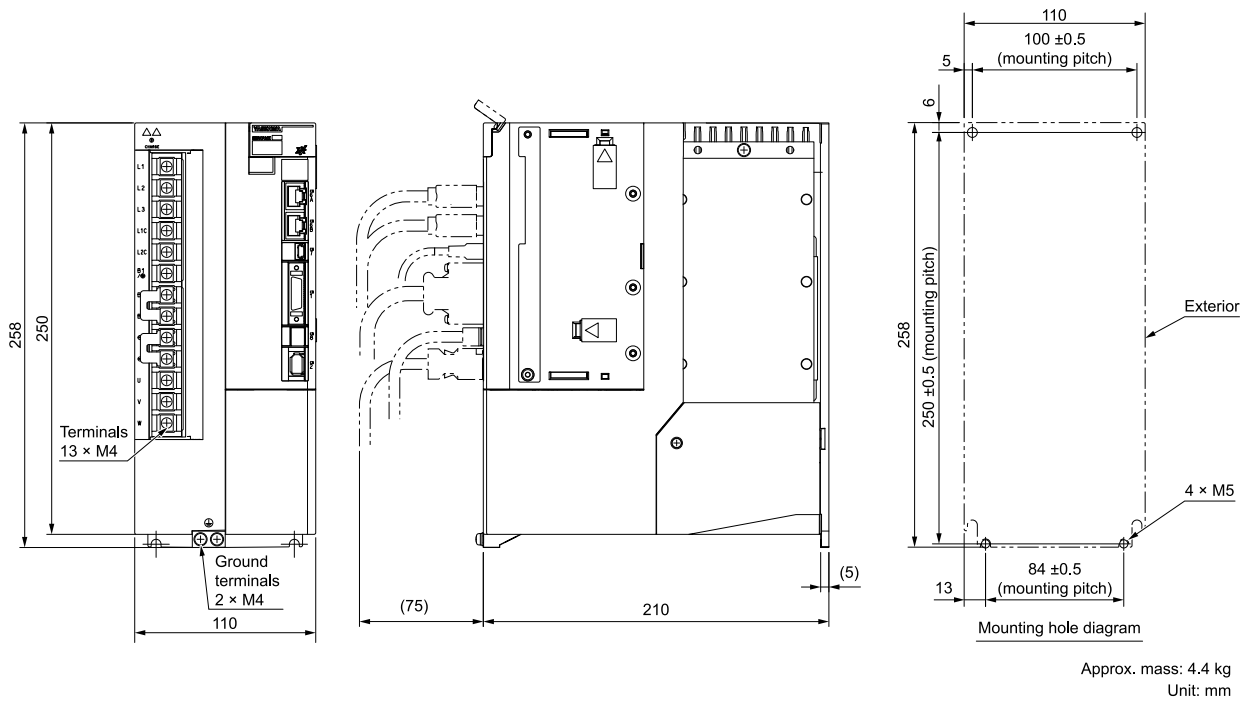
◆ SGDXS-180A, -200A



Note:

These drawings show the SERVOPACK with the terminal cover removed.

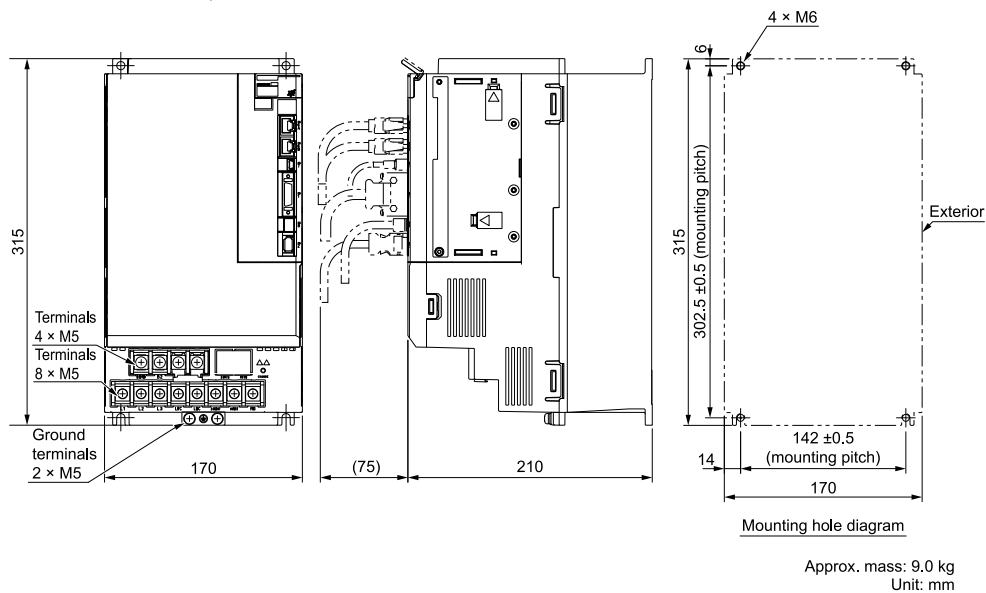
◆ **SGDXS-330A**

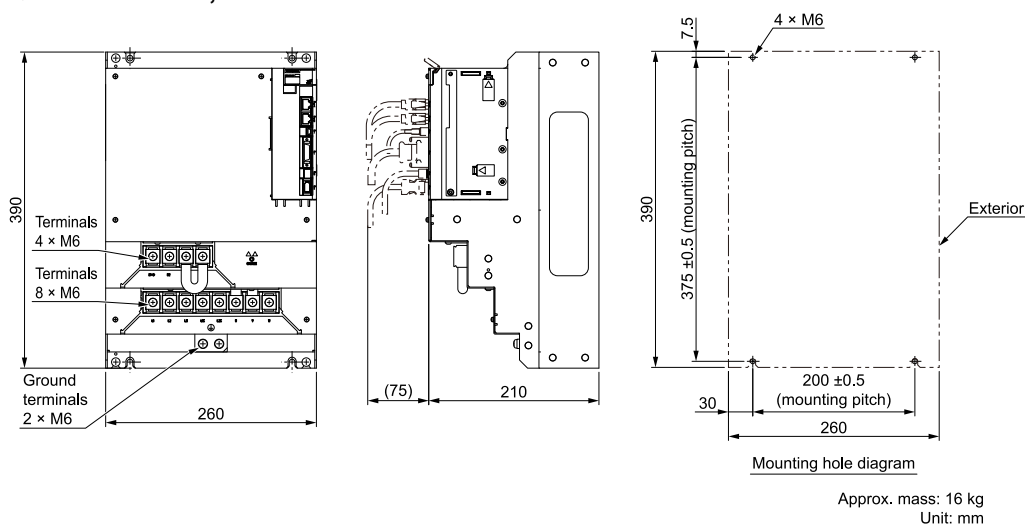


Note:

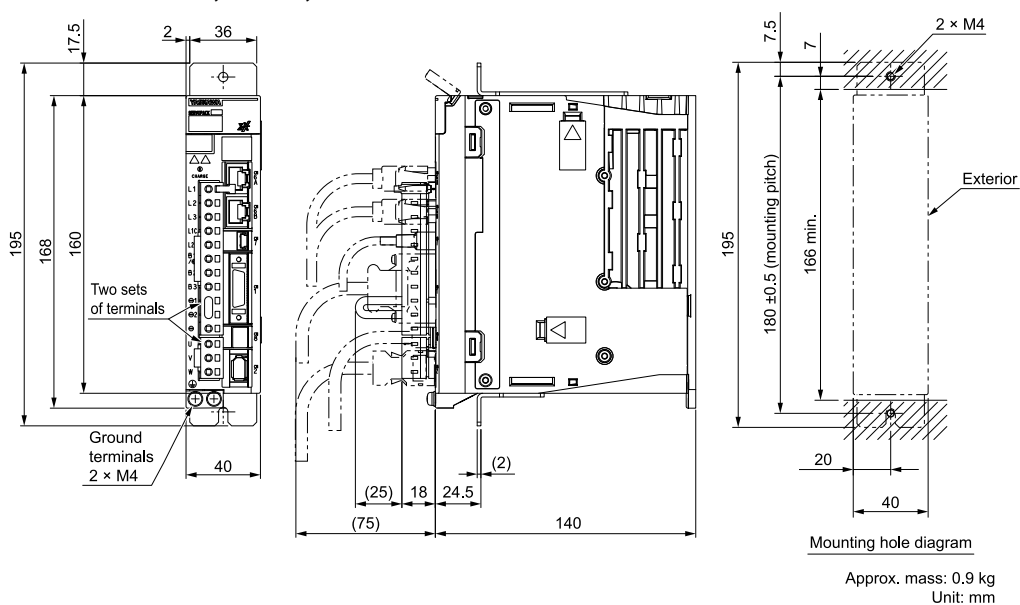
These drawings show the SERVOPACK with the terminal cover removed.

◆ **SGDXS-470A, -550A**

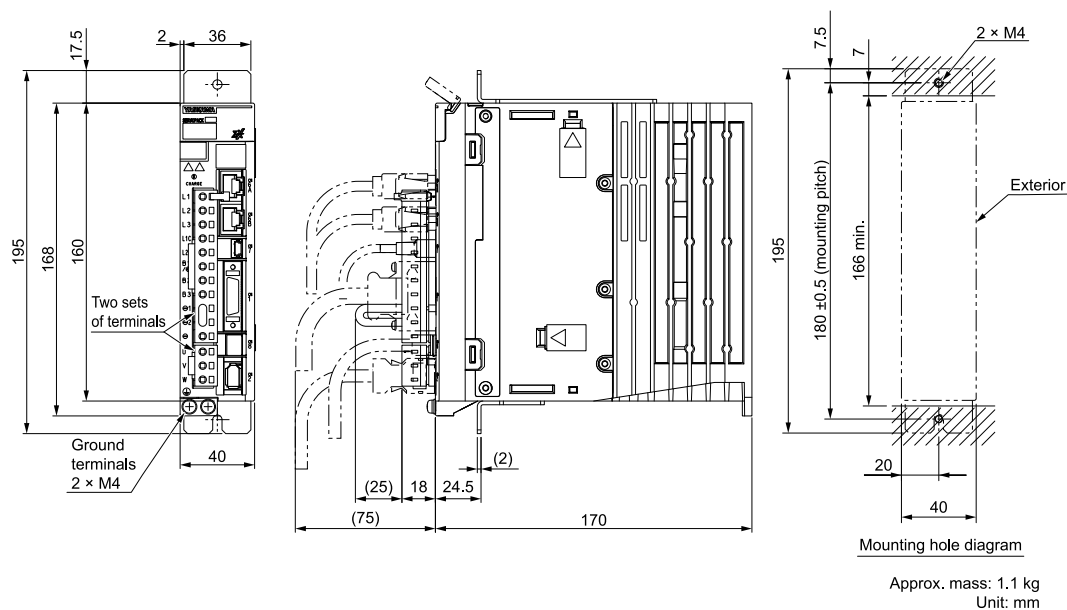


◆ **SGDXS-590A, -780A**■ **Rack-mounted SERVOPACKs**

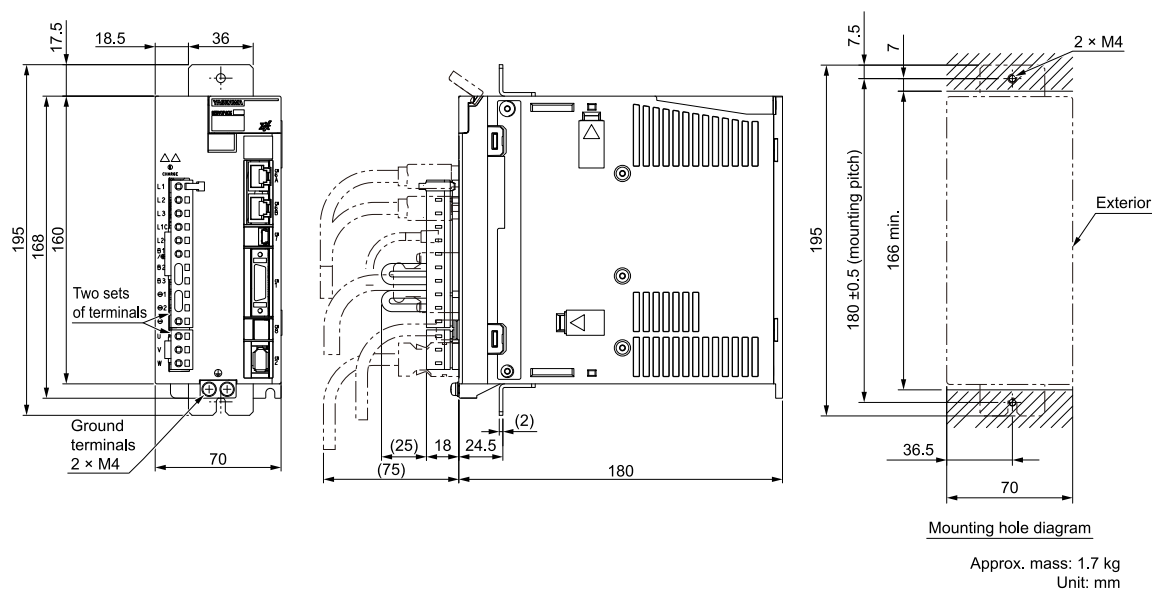
Hardware Option Code: 0001

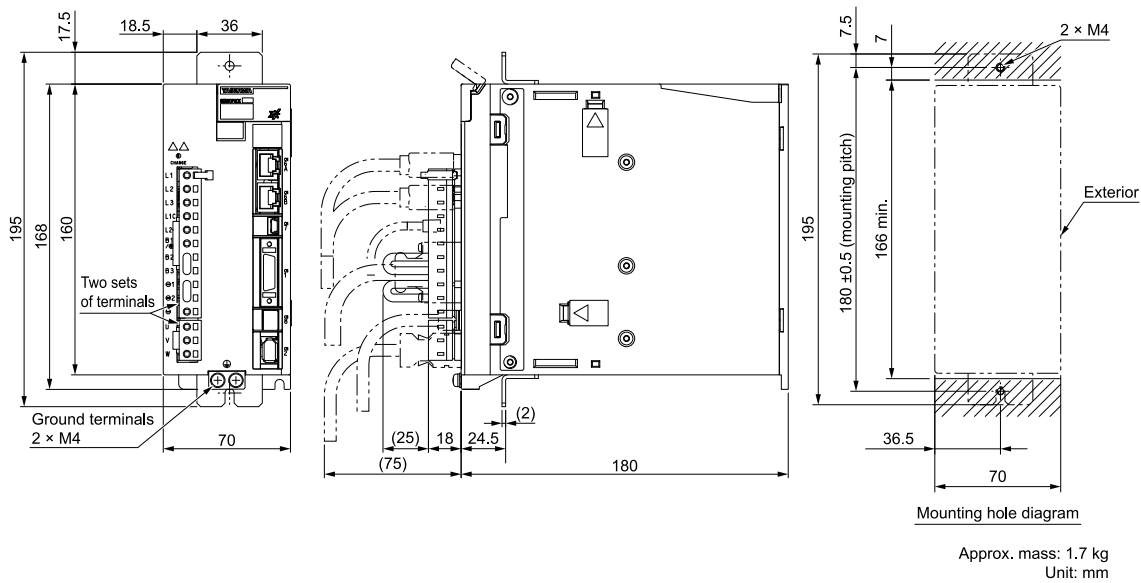
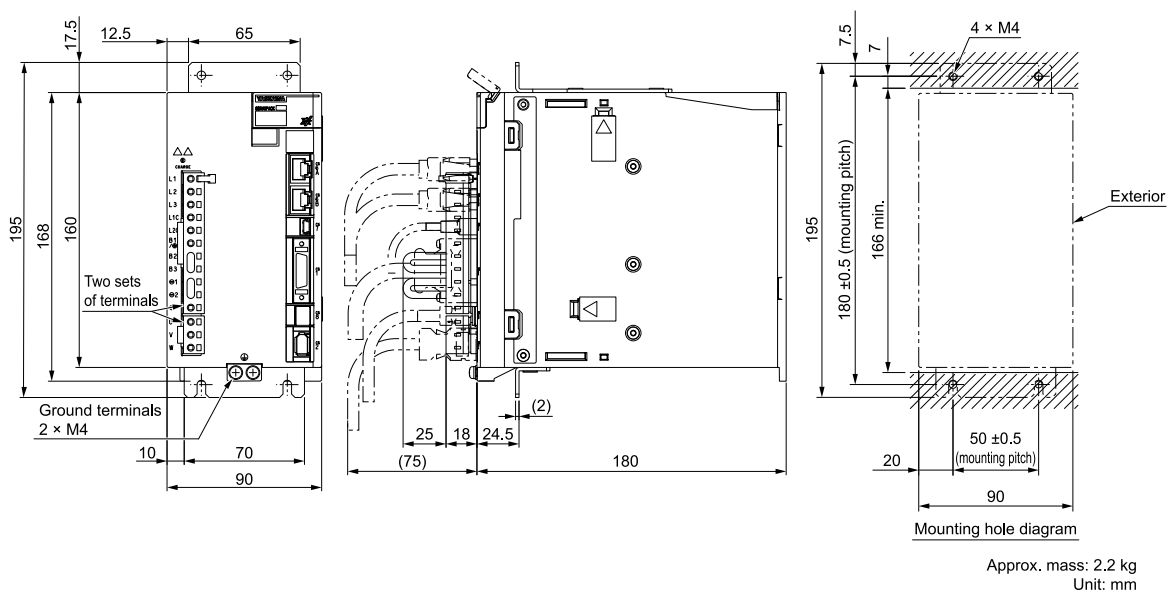
◆ **SGDXS-R70A, -R90A, -1R6A**

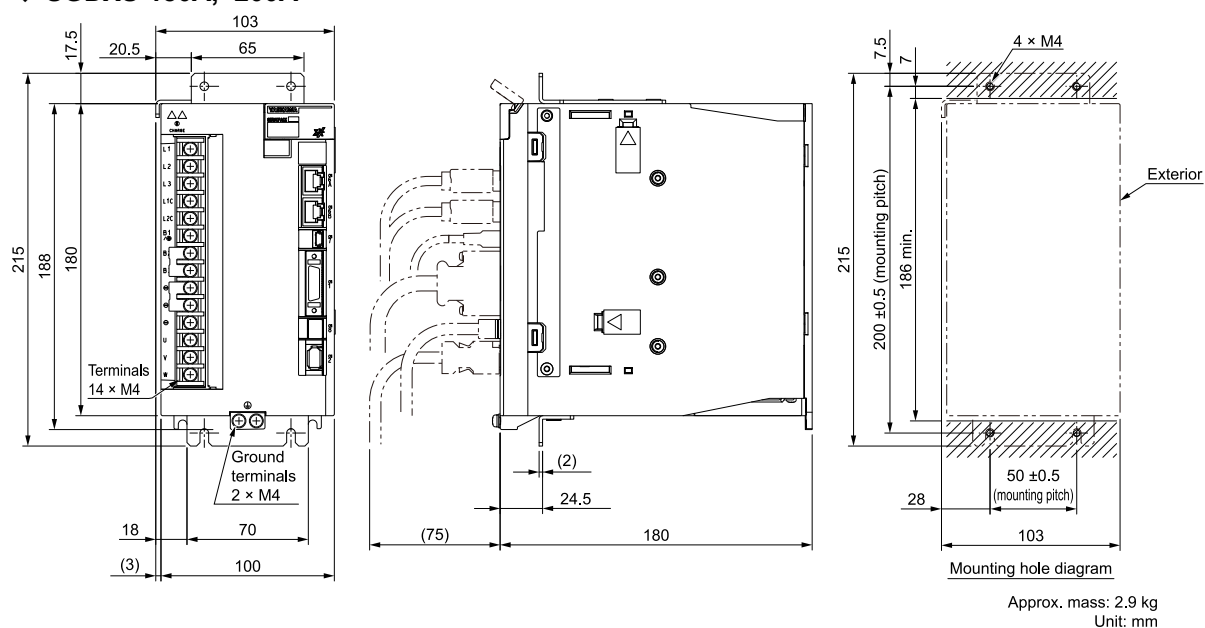
◆ SGDXS-2R8A



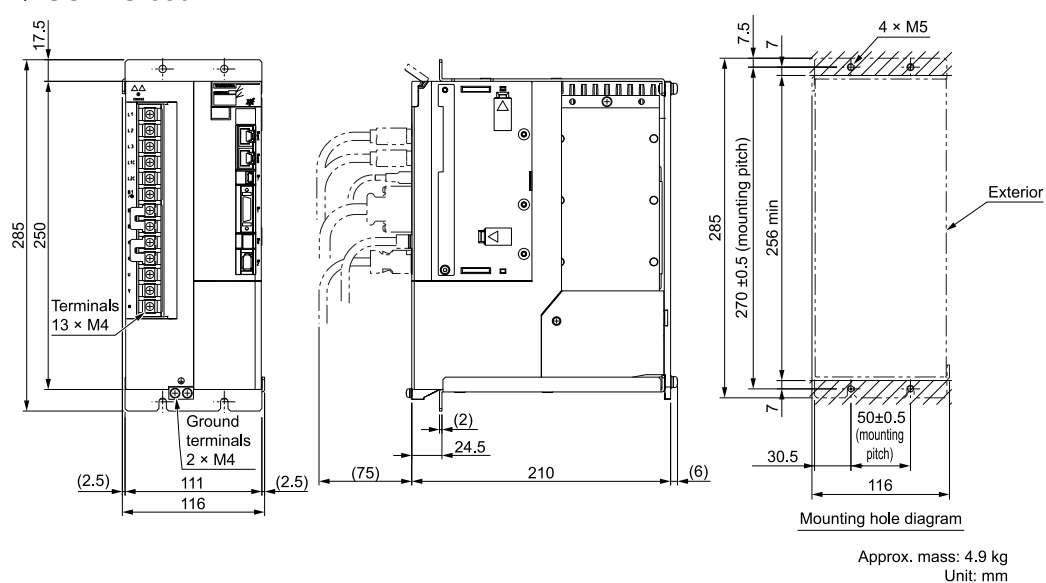
◆ SGDXS-3R8A



◆ **SGDXS-5R5A, -7R6A**◆ **SGDXS-120A**

◆ **SGDXS-180A, -200A****Note:**

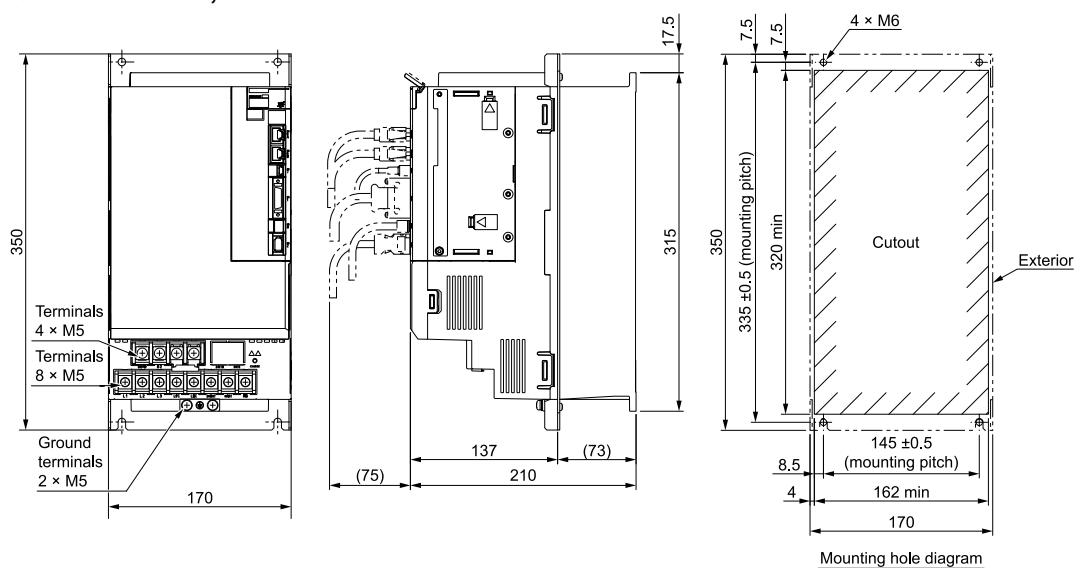
These drawings show the SERVOPACK with the terminal cover removed.

◆ **SGDXS-330A****Note:**

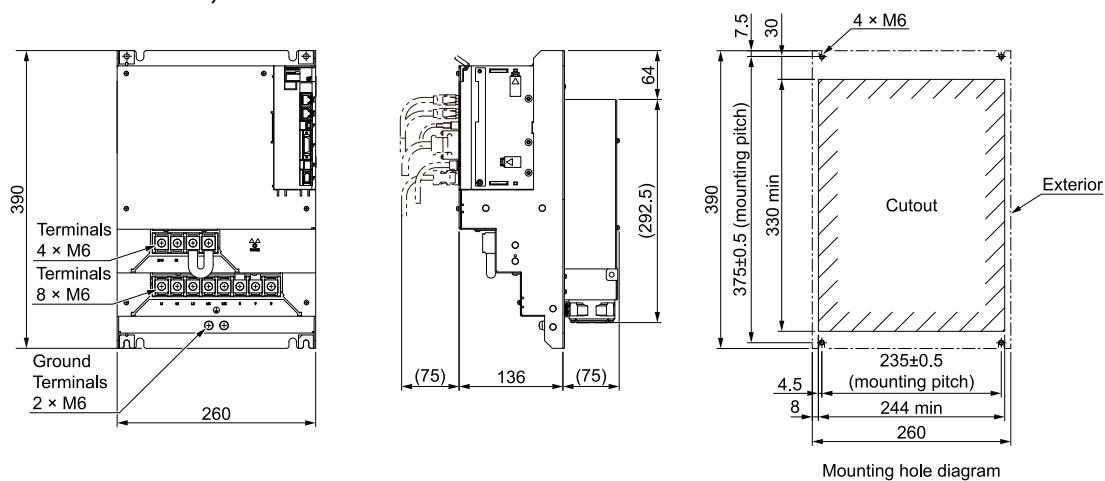
These drawings show the SERVOPACK with the terminal cover removed.

■ **Duct-ventilated SERVOPACKs**

Hardware Option Code: 0001

◆ **SGDXS-470A, -550A**

Approx. mass: 9.0 kg
Unit: mm

◆ **SGDXS-590A, -780A**

Approx. mass: 15 kg
Unit: mm