

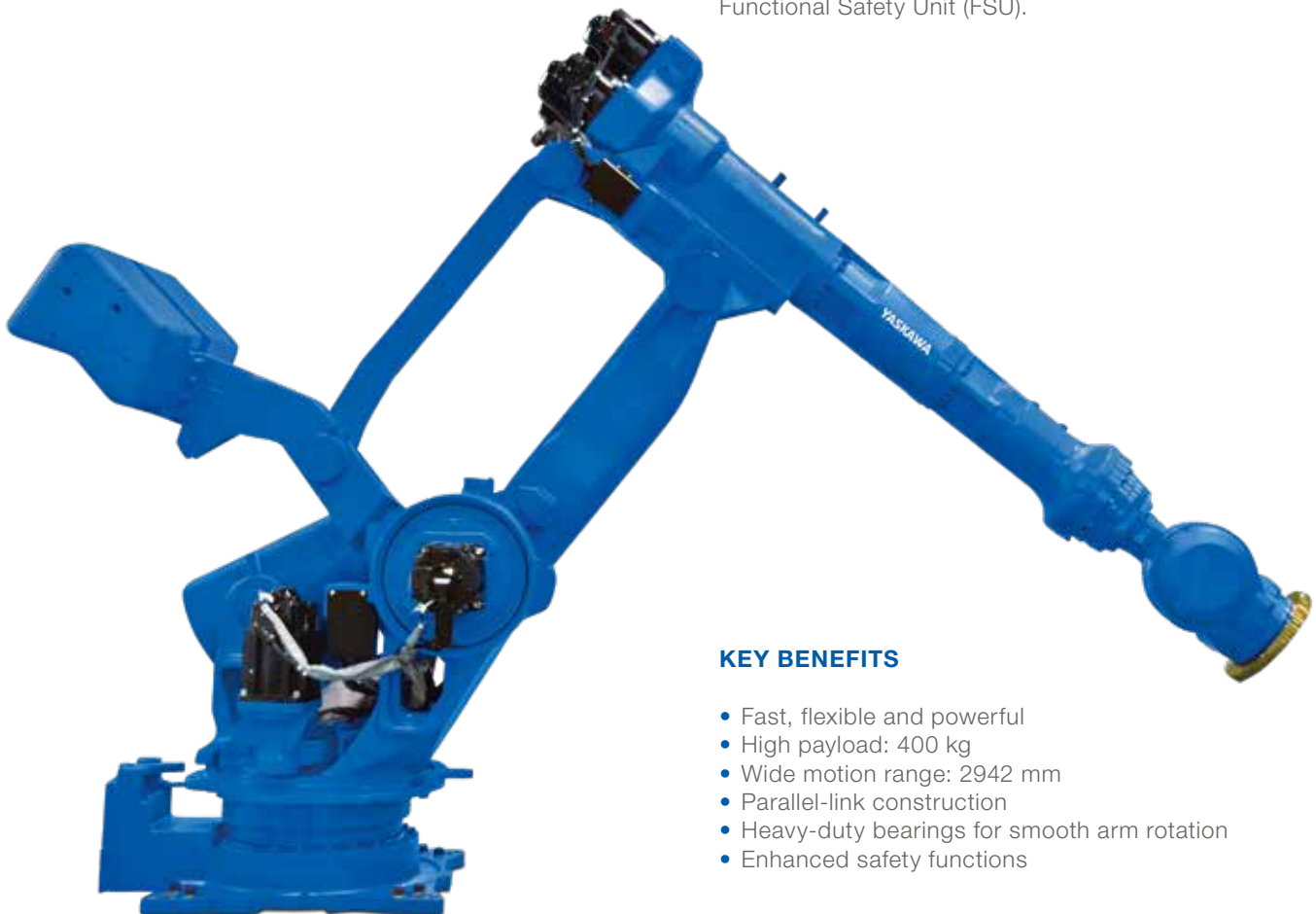
# MOTOMAN GP400

## Handling & General Applications with the GP-series

The 6-axis MOTOMAN GP400 is a versatile, powerful robot offering superior performance for a variety of applications. It provides a high payload of 400 kg and a wide motion range, which especially enables the handling of large work pieces.

The robot features a parallel-link construction for strength, rigidity and stabilization of high moment and inertia loads. The GP400 also has heavy-duty bearings which provide a smooth arm rotation.

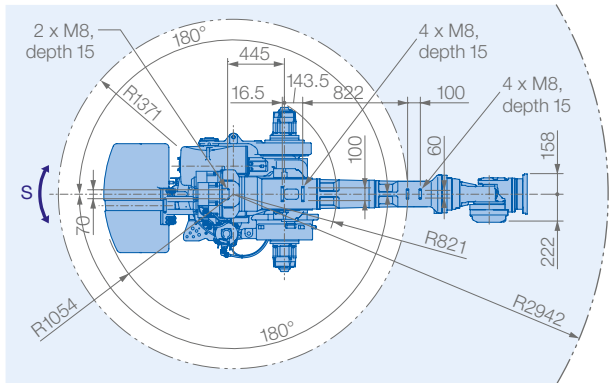
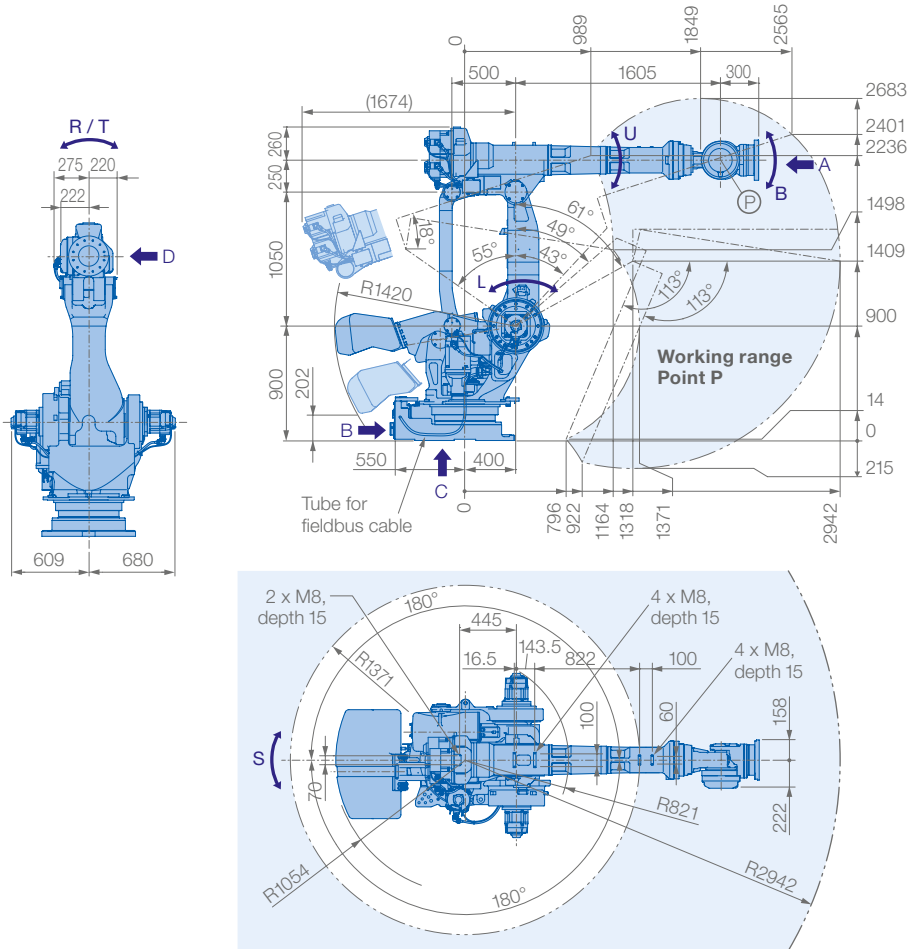
The MOTOMAN GP400 is available with the PLd Category 3 Functional Safety Unit (FSU).



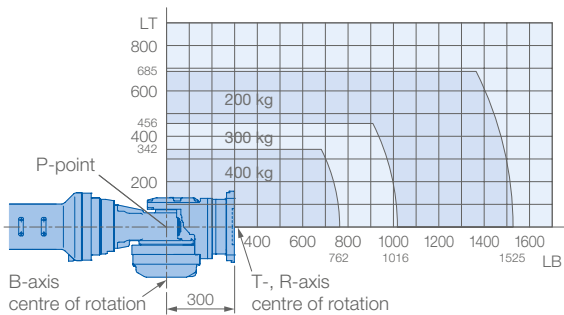
### KEY BENEFITS

- Fast, flexible and powerful
- High payload: 400 kg
- Wide motion range: 2942 mm
- Parallel-link construction
- Heavy-duty bearings for smooth arm rotation
- Enhanced safety functions

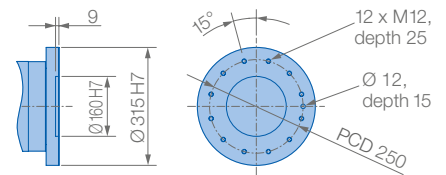
Controlled by  
**YRC1000**



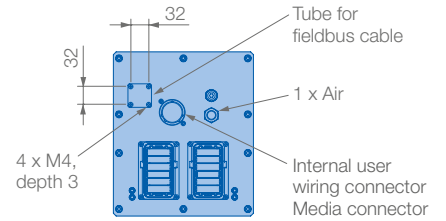
**Allowable wrist load**



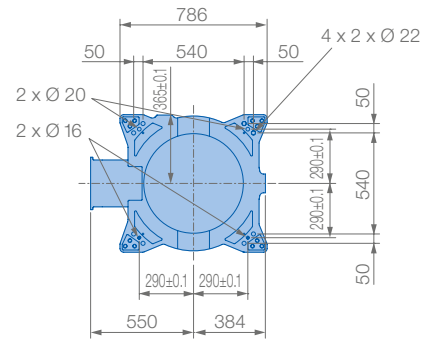
**View A**



**View B**

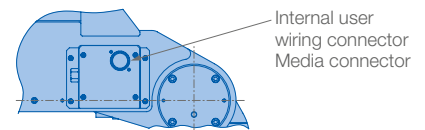


**View C**



Mounting option: Floor  
Protection class: IP30/67

**View D**



**Specifications GP400**

Axes	Maximum motion range [°]	Maximum speed [°/sec.]	Allowable moment [Nm]	Allowable moment of inertia [kg · m <sup>2</sup> ]	Controlled axes	6
S	±180	102	-	-	Max. payload [kg]	400
L	+61/-55	97	-	-	Repeatability [mm]	±0.3
U	+18/-113	97	-	-	Max. working range R [mm]	2942
R	±360	80	2989	500	Temperature [°C]	0 to +45
B	±115	80	2989	500	Humidity [%]	20 - 80
T	±360	172	1343	315	Weight [kg]	2840
					Power supply, average [KVA]	7.0