

EW 400 Box IPC

Fanless Advanced Heat-pipe thermal solution


At vel milita velis cus eost que vellabo. Bus, tet, quam volorec torpos reratquideni odis doloritat. Restempor sinum aligendem veliquam, sitatur sundit eiusda cum exeribusapis et latquo et officil ipid que cones dia inis dolupta temporum conemoluptus sitat. Ditaquaecus etur? Ut officilibus, simint, qui rerum quam ea nonsend esciendi ulluptas et odiciur sam et estis etur, sunt ea cumquia voluptas esed quisinveris

 **ESA elettronica S.p.A. (IT)**
 via Padre Masciadri 4/a
 I-22066 Mariano Comense (CO)
 Tel. +39 031 757400
 Fax +39 031 751777
 www.esaware.com
 Email: info@esaware.com

 **ESA Technology, Inc.(USA)**
 320 Tesconi Circle, Suite J
 Santa Rosa Ca 95401
 Tel. +1 (707) 544-7300
 Fax +1 (707) 544-7360
 www.esaware.com
 Email: info@esaware.com

 **ESA Elettronica GmbH (D)**
 Carl-Zeiss-Strasse, 35
 D-63322 Rödermark
 Tel. +49 (0) 6074/486 45-0
 Fax +49 (0) 6074/486 45-66
 www.esaware.com
 Email: info@esaware.com

 **ESA Europa S.L.U. (ES)**
 Passeig del Ferrocarril, 335
 E-08860 Castelldefels-Barcelona
 Tel. +34 936455014
 Fax +34 936455013
 www.esaware.com
 Email: info@esaware.com

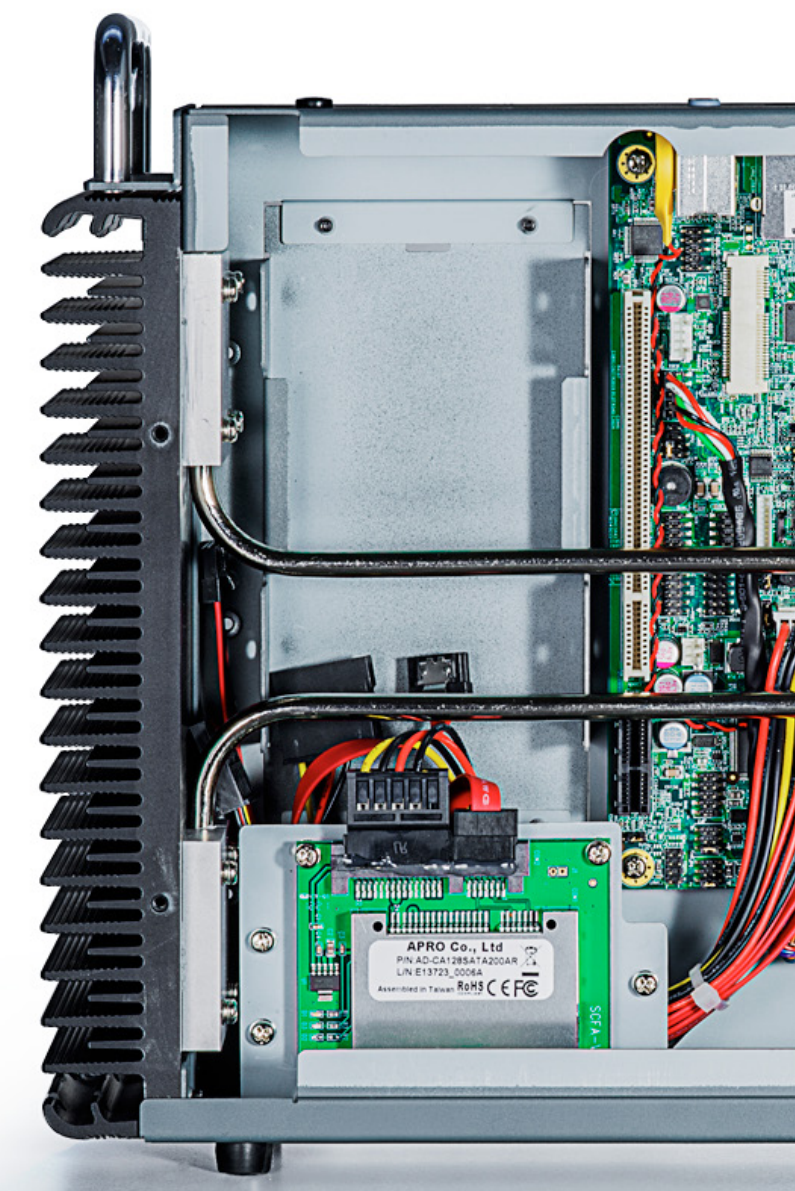
 **ESA Software & Automation India Pvt. Ltd. (IND)**
 B.R. House, 3rd Floor
 Hennur Main Road, Bangalore-560043
 Tel. +91 8025435656
 Fax +91 8025435658
 www.esaware.com
 Email: info@esaware.com

 **ESA Electronic Technology (Shanghai) Co. Ltd**
 意萨电子科技 (上海) 有限公司
 Unit d1, 6F, bldg. 4#, no.889 Yishan rd.
 2000233 - Shanghai, Cina
 中国上海市宜山路889号齐来工业城4号楼6层D1
 Tel. +86 (21)60907250
 Fax +86 (21)60907258
 www.esaware.com
 Email: info@esaware.com

 **ESAElektronik Technology Ticaret Limited Şirketi (TR)**
 Şerifali Mahallesi, Çetin Cad. Kible Sok.
 No:6 Of Plaza Kat:5 Daire:7
 Ümraniye / İstanbul / Türkiye
 Tel.: +90 216 466 70 33-34
 Fax: +90 216 466 70 99
 Tamer Yiğit - Country Sales Manager
 www.esaware.com
 Email: info@esaware.com



EW4 Box IPC



At vel milita velis cus eost que vellabo. Bus, tet, quam volorec torpos reratquideni odis doloritat. Restempor sinum aligendem veliquam, sitatur sundit eiusda cum exeribusapis et latquo et officil ipid que cones dia inis dolupta temporum conemoluptus sitat. Ditaquaecus etur? Ut officilibus, simint, qui rerum quam ea nonsend esciendi ulluptas et odiciur sam et estis etur, sunt ea cumquia voluptas esed quisinveris

EW 400 Box IPC Rugged

Fanless Advanced Heat-pipe thermal solution



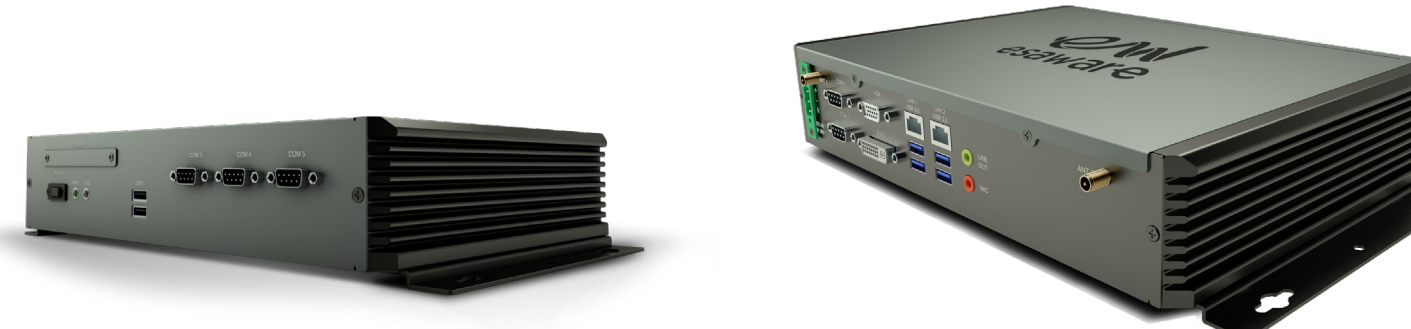
EW 400 Box IPC Rugged

Fanless Advanced Heat-pipe thermal solution



EW 400 Box IPC Atom

Fanless Advanced Heat-pipe thermal solution



EW 410 Box IPC Compact

Fanless Heat-pad passive thermal solution



• Enclosure	• Heavy Duty Steel chassis	• LED red HDD
	• Aluminium Heat-Sink	• Protection Degree IP20
	• LED green on/off	• Power connector industrial
	• Selection ATX/APO via Bios	
	• On/Off push-button	
• CPU Fanless	• Core i3-3120ME 2,4GHz / Core i3-3120ME 2,5GHz	
• Chipset / GPU	• QM77 DMI 5GT/s	• HD Graphics 4000 min 650MHz max 1GHz
• RAM	• RAM up to 16GB DDR3	
	• SODIMM 204-pin 1088/1333 Mhz	
• I/O	• 1 x RS232/422/485 Sub-D 9	• 1 x VGA
	• 3 x RS232 Sub-D 9 pin	• 1 x DVI-D
	• 4 x USB ver. 3.0	• 1 x HDMI
	• 2 x Ethernet 1 Gbit RJ45 - intel	• 1 x Line Out / Mic In
	• 1 x MiniPCIe	• 1 x CFast slot external access
• Drivers	• HDD/SDD/CFast	• RAID 0-1
• Mechanical slot	• 2 x slot (1PCIe x 1 + 1PCI)	
• Operating T (°C)	• -20 ... 60	
• Storage T (°C)	• -40 ... 65	
• Humidity	• 85% no condensing	
• Weight (kg)	• 4,5	
• Certifications	• CE	
• Power supply	• 9 ... 26 VDC 45 W (i3-4GB+HDD)	
	• External adapter 22VAC/24VDC 120 W	

• Enclosure	• Heavy Duty Steel chassis	• LED red HDD
	• Selection ATX/APO via Bios	• Protection Degree IP20
	• LED green on/off	• Power connector industrial
	• Aluminium Heat-Sink Thermal piping system	
	• On/Off push-button	
• CPU Fanless	• Intel Core i3-3120ME 2,4GHz / i7-3610QE 2,3GHz	
• Chipset / GPU embedded	• QM77 DMI 5GT/s	• HD Graphics 4000 650MHz max 1GHz
• RAM	• RAM up to 16GB DDR3	• SODIMM 204-pin 1088/1333 MHz
• I/O	• 1 x RS232/422/485 Sub-D 9	• 1 x VGA
	• 3 x RS232 Sub-D 9 pin	• 1 x DVI-D
	• 4 x USB ver. 3.0	• 1 x HDMI
	• 2 x Ethernet 1 Gbit RJ45 - intel	• 1 x Line Out / Mic In
	• 1 x MiniPCIe	• 1 x CFast slot external access
• Drivers	• HDD/SDD/CFast	• RAID 0-1
• Operating T (°C)	• -20 ... 60	• External adapter
• Storage T (°C)	• -40 ... 65	• 22VAC/24VDC 120 W
• Humidity	• 85% no condensing	
• Weight (kg)	• 6	
• Power supply	• 9 ... 26 VDC 55 W (i7-4GB+HDD)	
• Size	• 337x239x77mm	

• Enclosure	• Heavy Duty Steel chassis	• LED red HDD
	• Aluminium Heat-Sink Thermal piping system	• Protection Degree IP20
	• LED green on/off	• Power connector
	• Selection ATX/APO via Bios	
	• On/Off push-button	
• CPU Fanless	• Atom Dual Core D2550 1,86 GHz Fanless	
• Chipset / GPU embedded	• NM10 DMI 2,5GT/s	• GMA3650 min 640 MHz
• RAM	• 2 GB RAM DDR3 800/1066	• SODIMM 204-pin 800/1066 MHz (opt.4GB)
• I/O	• 2 x RS232/422/485 Sub-D 9	• 1 x VGA
	• 3 x RS232 Sub-D 9 pin	• 1 x DVI-D
	• 6 x USB ver. 2.0	• 1 x Line Out / Mic In
	• 2 x Ethernet 1 Gbit RJ45 - intel	• 1 x CFast slot external access
	• 1 x MiniPCIe slot	
• Drivers (opt)	• HDD/SDD/CFast	
• Operating T (°C)	• -20 ... 60	• External adapter
• Storage T (°C)	• -40 ... 65	• 220VAC/24VDC 120 W
• Humidity	• 85% no condensing	
• Weight (kg)	• 3,0	
• Power supply	• 9 ... 26 VDC 22 W (2GB+HDD)	
• Size	• 299x216x59mm	

• Aluminum Enclosure	• Heavy Alu extrusion chassis	• LED blue HDD
	• Aluminium Heat-Sink	• Protection Degree IP20
	• LED green on/off	• Power connector
	• Selection ATX/APO via Bios	
	• On/Off push-button	
• CPU Fanless	• Atom Dual Core D2550 1,86 GHz Fanless	
• Chipset / GPU	• NM10 DMI 2,5GT/s	• GMA3650 1920x1200 max.resolution
• RAM	• RAM 2GB DDR3 1066 MHz on board	
• I/O	• 1 x RS232/422/485 Sub-D 9	• 1 x DVI-I
	• 4 x USB ver. 2.0	• 1 x Line Out / Mic In
	• 1 x SIM slot	• 1 x CFast slot external access
	• 3 x MiniPCIe slot (1xSATA)	
	• 2 x Ethernet 1Gbit RJ45 - Intel 82574L	
• Drivers	• CFast / mSATA	
• Operating T (°C)	• 0 ... 60	• External adapter
• Storage T (°C)	• -40 ... 80	• 220VAC/24VDC 120 W
• Humidity	• 85% no condensing	
• Weight (kg)	• 0,7	
• Power supply	• 9 ... 24 VDC 15W 20W	
• Size	• 299x216x59mm	

Every product has the following certifiions
Immunity EN 61000-6-2 / Emission EN 6100-6-4

