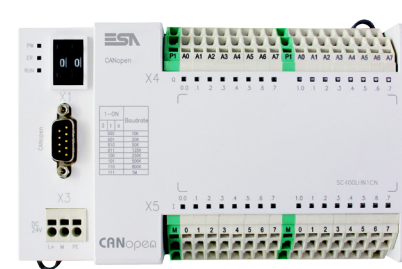


SC400PLC



SC400 Remote I/O



Connect ideas. Shape solutions.
www.esa-automation.com
info@esa-automation.com



SC Series

Programming Software **SmartClick** FreeDownload



SC400 PLC

| | SC400CPU1CN | SC400CPU2CN | SC400CPU3CN |
|-----------------------------------|-------------|-------------------------|-------------|
| • Processor | | X86 | |
| • RAM | | 256 MB | |
| • Flash | | 512 MB | |
| • SoftPlc | | CoDeSys v. 2.3 | |
| • Serial Ports | | 1 x RS232/485 + 1 x CAN | |
| • Network | | 2 x 10/100Mb + 1 x 1Gb | |
| • USB Ports | | 2 x Usb Host 2.0 | |
| • External Dimension (W/D/H) (mm) | | 162x90x60 | |
| • Power Supply (Vdc) | | 18-32 | |
| • Temperature (°C) | | 0 - 65 | |
| • Weight (kg) | | 0.6 | |

| Codes | Descriptions |
|-------------|----------------------------------|
| SC400CPU1CN | CPU with 16DI/8DO/8AI/2AO/2HSIO |
| SC400CPU2CN | CPU with 24DI/24DO |
| SC400CPU3CN | CPU with 16DI/16DO/8AI/4AO/2HSIO |



SC400 Remote I/O

| | SC400LHN1CN | SC400LHN2CN |
|-----------------------------------|------------------------|----------------------------------|
| • Supply Voltage (Vdc) | | 24 |
| • Input Number and Type | 16 Digital | 8 Digital + 6 Analog |
| • Output Number and Type | 16 Digital (Relay 2 A) | 8 Digital (Relay 2 A) + 2 Analog |
| • Temperature (°C) | | 0 - 65 |
| • External Dimension (W/D/H) (mm) | | 156 x 115 x 52 |
| • Weight (kg) | | 0.2 |

| Codes | Descriptions |
|-------------|------------------------------|
| SC400LHN1CN | Remote I/O (16DI/16DO) |
| SC400LHN2CN | Remote I/O (8DI/6AI/8DO/2AO) |



ESA elettronica S.p.A.
via Padre Masciadri 4/a
22066 Mariano Comense (CO) -Italia
Tel. +39 031 757400
Fax +39 031 751777



ESA energy S.r.l.
Via Fortunato Zeni 8
38068 Rovereto (TN) - Italia
Tel. +39 0464 443272
Fax +39 0464 443273



ESA Elettronica GmbH
Carl-Zeiss-Strasse, 35
63322 Rödermark - Deutschland
Tel. +49 6074 486 45 0
Fax +49 6074 486 45 66



ESA Europa S.L.U.
Passeig del Ferrocarril, 335
08860 Castelldefels (Barcelona) - España
Tel. +34 936455014
Fax +34 936455013



ESA Software & Automation India Pvt. Ltd
B.R. House, 3RD Floor Hennur Main Road,
Bangalore 560 043 - India
Tel. +91 80 25435656
Fax +91 80 25435658



意萨电子科技(上海)有限公司
中国上海市宜山路889号齐来工业城4号楼6层D1
ESA Electronic Technology (Shanghai) Co. Ltd
Unit D1, 6F, Bldg. 4#, No. 889 Yishan Road
Shanghai 200233 - P.R.China
Tel. +86 21 6090 7250
Fax +86 21 6090 7258



ESAElektronik Technology Ticaret Limited Şirketi
Şerifali Mah., Çetin Cad. Kible Sk.
No: 6 Of Plaza Kat: 5 D: 7
Ümraniye/İstanbul - Türkiye
Tel.: +90 216 466 70 33
Fax: +90 216 466 70 99



ESA Technology, Inc.
320 Tesconi Circle, Suite J
Santa Rosa CA 95401 - U.S.A.
Tel. +1 707 5447300
Fax +1 707 5447360



HMI & PLC

Put more control in your hands

4051500.026.2

| | SC103 | SC107- SC207 | SC110 - SC210 |
|------------------------|---------------------------------------|---|---|
| • Size | 3,5" Wide TFT 65k Colors White LED | 7" Wide TFT 65k Colors White LED | 10,1" Wide TFT 65k Colors White LED |
| • Resolution (pixel) | 480 x 272 | 800 x 480 | 1024 x 600 |
| • Flash | | 64 MB | |
| • Serial Ports | Port 1 RS232/RS485/COM0 | SC107 Port 1-2 RS232/RS485/COM0 SC207 Port 1 RS232/RS485/MPI | SC110 Port 1-2 RS232/RS485/COM0 SC210 Port 1 RS232/RS485/MPI Port 2 RS232/RS485/COM0 |
| • Network | 1 x Ethernet 10/100 Mbit + RJ45 | | |
| • USB Ports | 1 x v 1.1 Host | 1 x v 1.1 Host + 1 x 1.1 Device | |
| • Slot | 1 x Secure Digital/MMC | | |
| • External (W/D/H)(mm) | 113 x 74 x 50 | SC107 198,8 x 137,8 x 47,5 SC207 202 x 142 x 40 | 280 x 190 x 44 |
| • Cut-out (W/D/H)(mm) | 105 x 66 | SC107 190,2 x 129,2 SC207 194 x 134 | 271 x 181 |
| • Power Supply | | 18...32 Vdc | |
| • Power Consumption | - 3 W (24 Vdc) | - 5 W (24 Vdc) | - 8 W (24 Vdc) |
| • Temperature (C°) | | 0 ... +50 | |
| • Humidity | 10...90% (non condensing) | | |
| • Weight (kg) | - 0,3 | - 0,8 | - 1,4 |

| Codes | Descriptions |
|------------|--|
| SC103A0101 | 3,5" 65K COLORS ABS, PORT1/ETH |
| SC107A0111 | 7" 65K COLORS, ABS, PORT1/PORT2/ETH/SD SLOT |
| SC207A0101 | 7" 65K COLORS, ABS, PORT1/ETH/SD SLOT |
| SC110A0111 | 10,1" 65K COLORS, ABS, PORT1/PORT2/ETH/SD SLOT |
| SC210A0112 | 10,1" 65K COLORS, ABS, PORT1/PORT2/ETH/SD SLOT |



IT Series

Programming Software FreeDownload



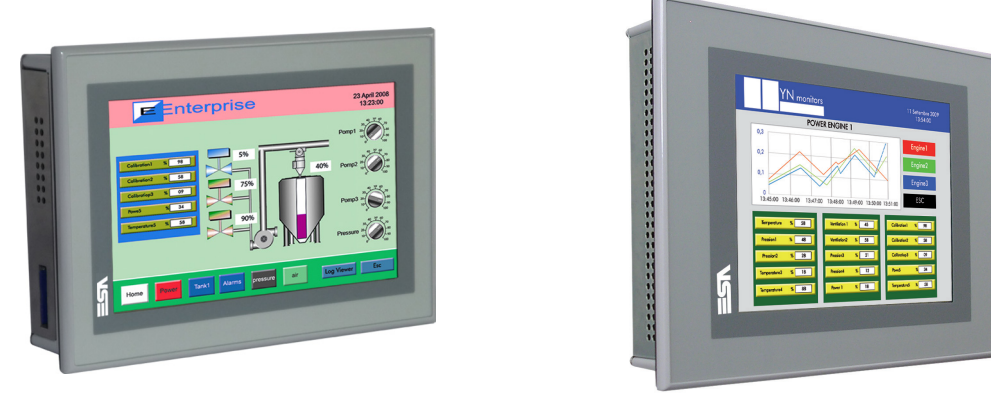
| | IT104G | IT104T | IT105T |
|------------------------|---|---|---|
| • Size | 4,3" TFT 32 tones of gray White LED | 4,3" TFT 65k Colors White LED | 5,7" TFT 65k Colors White LED |
| • Resolution (pixel) | 480x272 | 480x272 | 320x240 |
| • Flash | | 32 MB | |
| • Serial Ports | SP1 RS232/485/MPI ; SP2 RS232/485/MPI, CAN, Profibus-DP, ProfiNet | SP1 RS232/485/MPI COM0; SP2 RS232/485/MPI, CAN, Profibus-DP, ProfiNet | SP1 RS232/485/MPI COM0; SP2 RS232/485/MPI, CAN, Profibus-DP, ProfiNet |
| • Network | Ethernet 10/100 Mbit - RJ45 | | |
| • USB Ports | 1 x v 1.1 Host | | 1 x v 1.1 Host + 1 x v 1.1 Device |
| • Slot | - | - | Secure Digital / MMC |
| • Audio | - | - | - |
| • External (W/D/H)(mm) | 166 x 112 x 31 (50 with double port) | | 210,9 x 158,6 x 42,8 (61 with double port) |
| • Cut-out (W/D/H)(mm) | 157 x 103 | | 194 x 142 |
| • Power Supply | | 18...32 Vdc | |
| • Power Consumption | - 7 W (24 Vdc) | | - 10 W (24 Vdc) |
| • Temperature (C°) | | 0 ... +50 | |
| • Humidity | | <90% (non condensing) | |
| • Weight (kg) | - 0,6 | | - 1,1 |

| Codes | Descriptions |
|------------|--|
| IT104G0101 | 4,3" Wide 32 GREY TONES TFT/SP1/ETH |
| IT104G0111 | 4,3" Wide 32 GREY TONES TFT/SP1/SP2/ETH |
| IT104G0121 | 4,3" Wide 32 GREY TONES TFT/SP1/CAN/ETH |
| IT104G0131 | 4,3" Wide 32 GREY TONES TFT/SP1/DP/ETH |
| IT104G0151 | 4,3" Wide 32 GREY TONES TFT/SP1/PROFINET/ETH |
| IT104T0101 | 4,3" Wide 65k Colors TFT/SP1/ETH |
| IT104T0111 | 4,3" Wide 65k Colors TFT/SP1/SP2/ETH |
| IT104T0121 | 4,3" Wide 65k Colors TFT/SP1/CAN/ETH |
| IT104T0131 | 4,3" Wide 65k Colors TFT/SP1/DP/ETH |
| IT104T0151 | 4,3" Wide 65k Colors TFT/SP1/PROFINET/ETH |
| IT104T0511 | 4,3" Wide 65k Colors TFT/COM0/SP2/ETH |

Vibration EN60068-2-6
Shock EN60068
Humidity EN60068-2-30



Programming Software FreeDownload



| | IT107W | IT107T |
|------------------------------|---|--|
| • Size | 7" Wide TFT 65k Colors White LED | 7,5" TFT 65k Colors White LED |
| • Resolution (pixel) | 800x480 | 640x480 |
| • Flash | | 32 MB |
| • Serial Ports | SP1 RS232/485/MPI SP2 RS232/485/MPI, CAN, Profibus-DP | SP1 RS232/485/MPI COM0 SP2 RS232/485/MPI, CAN, Profibus-DP, ProfiNet |
| • Network | Ethernet 10/100 Mbit - RJ45 | |
| • USB Ports | 1 x v 1.1 Host + 1 x v 1.1 Device | |
| • Slot | Secure Digital / MMC | |
| • Audio | - | |
| • External (W/D/H)(mm) | 202 x 142 x 39,2 (58,2 with double port) | 245,9 x 188,6 x 37,6 (56,6 with double port) |
| • Cut-out (W/D/H)(mm) | 194 x 134 | 233 x 176 |
| • Power Supply | 18...32 Vdc | |
| • Power Consumption | - 8 W (24 Vdc) | - 10 W (24 Vdc) |
| • Operating Temperature (C°) | 0 ... +50 | |
| • Humidity | <90% (non condensing) | |
| • Weight (kg) | - 1,6 | - 2 |

| Codes | Descriptions |
|-------------|--|
| IT107W0101 | 7" Wide 65k COLORS SP1/ETH |
| IT107W0111 | 7" Wide 65k COLORS SP1/SP2/ETH |
| IT107W0121 | 7" Wide 65k COLORS SP1/CAN/ETH |
| IT107W0131 | 7" Wide 65k COLORS SP1/DP/ETH |
| IT107W0111B | 7" Wide 65K COLORS SP1/SP2/ETH/BATTERY |
| IT107T0111 | 7,5" 65k COLORS SP1/SP2/ETH |
| IT107T0121 | 7,5" 65k COLORS SP1/CAN/ETH |
| IT107T0131 | 7,5" 65k COLORS SP1/DP/ETH |
| IT107T0151 | 7,5" 65k COLORS SP1/PROFINET/ETH |
| IT107T0511 | 7,5" 65k COLORS COM0/SP2/ETH |

Vibration EN60068-2-6
Shock EN60068
Humidity EN60068-2-30



Programming Software FreeDownload



| | IT110T | IT112T | IT115T |
|-----------------------|---|--|--------------------------|
| • Size | 10,4" 65k Colors CCFL | 12,1" 65k Colors White LED | 15" 65k Colors White LED |
| • Resolution (pixel) | 640x480 | 800x600 | 1024 x 768 |
| • Flash | | 64 MB | |
| • Serial Ports | SP1 RS232/485/MPI ; SP2 RS232/485/MPI, CAN, Profibus-DP, ProfiNet | | |
| • Network | 2 x Ethernet 10/100 Mbit - RJ45 | | |
| • USB Ports | 2 x v 1.1 Host + 1 x v 1.1 Device | 2 x v 1.1 + 1 on the front Host 1 x v 1.1 Device | |
| • Slot | Secure Digital / MMC + Compact Flash | | |
| • Audio | Mic IN - Line OUT (Only Pro Version) | | |
| • External(W/D/H)(mm) | 336,3 x 256 x 62,9 | | 425 x 300x 66,8 |
| • Cut-out (W/D/H)(mm) | 314 x 240 | | 399 x 274 |
| • Power Supply | | 18...32 Vdc | |
| • Power Consumption | - 15 W (24 Vdc) | | - 20 W (24 Vdc) |
| • Temperature (C°) | 0 ... 50 | | |
| • Humidity | <90% (non condensing) | | |
| • Weight (kg) | - 2,8 kg | | - 6 kg |

| Codes | Descriptions |
|-------------|--|
| IT110T01120 | 10,4" 65k COLORS SP1/SP2/2ETH,CF |
| IT110T01220 | 10,4" 65k COLORS SP1/CAN/2ETH,CF |
| IT110T01320 | 10,4" 65k COLORS SP1/DP/2ETH,CF |
| IT110T01520 | 10,4" 65k COLORS SP1/PROFINET/2ETH,CF |
| IT110T1112 | 10,4" 65k COLORS SP1/SP2/2ETH/AUDIO,CF/PRO |
| IT110T1122 | 10,4" 65k COLORS SP1/CAN/2ETH/AUDIO,CF/PRO |
| IT110T1132 | 10,4" 65k COLORS SP1/DP/2ETH/AUDIO,CF/PRO |
| IT112T01120 | 12,1" 65k COLORS SP1/SP2/2ETH,CF |
| IT112T01220 | 12,1" 65k COLORS SP1/CAN/2ETH,CF |
| IT112T01320 | 12,1" 65k COLORS SP1/DP/2ETH,CF |
| IT112T01520 | 12,1" 65k COLORS SP1/PROFINET/2ETH,CF |
| IT112T1112 | 12,1" 65k COLORS SP1/SP2/2ETH/AUDIO,CF/PRO |
| IT112T1122 | 12,1" 65k COLORS SP1/CAN/2ETH/AUDIO,CF/PRO |
| IT112T1132 | 12,1" 65k COLORS SP1/DP/2ETH/AUDIO,CF/PRO |

The professional version of IT110, IT112 and IT115 can display the content of Excel, Word and PDF files directly on the HMI and access the internet through Internet Explorer

Vibration EN60068-2-6; Shock EN60068; Humidity EN60068-2-30



IT107 & IT112 Stainless Steel

Programming Software FreeDownload



| | IT107WX | IT112TX |
|------------------------|---|--------------------------------------|
| • Size | 7" Wide TFT 65k Colors White LED | 12,1" TFT 65k Colors White LED |
| • Resolution (pixel) | 800x480 | 800x600 |
| • Flash | 32 MB | 64 MB |
| • Serial Ports | SP1 RS232/485/MPI ; SP2 RS232/485/MPI, CAN, Profibus-DP | |
| • Network | Ethernet 10/100 Mbit - RJ45 | 2 x Ethernet 10/100 Mbit - RJ45 |
| • USB Ports | 1 x v 1.1 Host + 1 x v 1.1 Device | 2 x v 1.1 Host + 1 x v 1.1 Device |
| • Slot | Secure Digital / MMC | Secure Digital / MMC + Compact Flash |
| • Audio | - | Mic In + Line Out (Only Pro version) |
| • External (W/D/H)(mm) | 228 x 155 x 44,3 (63,7 with double port) | 336 x 256 x 67,6 |
| • Cut-out (W/D/H)(mm) | 219 x 146 | 320 x 240 |
| • Power Supply | | 18...32 Vdc |
| • Power Consumption | - 8 W (24 Vdc) | - 15 W (24 Vdc) |
| • Temperature (C°) | 0 ... +50 | |
| • Humidity | <90% (non condensing) | |
| • Weight (kg) | - 1,6 | - 4,8 |

INOX V2A (AISI 304) stainless steel particularly corrosion-resistant
TRUE FLAT touch screen

| Codes | Descriptions |
|-------------|--|
| IT107WX101 | 7"wide 65k COLORS/INX/SP1/ETH,SD |
| IT107WX111 | 7"wide 65k COLORS/INX/SP1/SP2/ETH,SD |
| IT107WX121 | 7"wide 65k COLORS/INX/SP1/CAN/ETH,SD |
| IT107WX131 | 7"wide 65k COLORS/INX/SP1/DP/ETH,SD |
| IT112TX1120 | 12,1" 65k COLORS/INX/SP1/SP2/2ETH,CF |
| IT112TX1220 | 12,1" 65k COLORS/INX/SP1/CAN/2ETH,CF |
| IT112TX1320 | 12,1" 65k COLORS/INX/SP1/DP/2ETH,CF |
| IT112TY112 | 12,1" 65k COLORS/PRO/INX/SP1/SP2/2ETH,AUDIO,CF |
| IT112TY122 | 12,1" 65k COLORS/PRO/INX/SP1/CAN/2ETH,AUDIO,CF |

The professional version of IT112 can display the content of Excel, Word and PDF files directly on the HMI and access the internet through Internet Explorer

Vibration EN60068-2-6
Shock EN60068
Humidity EN60068-2-30
DIN EN1672-2

